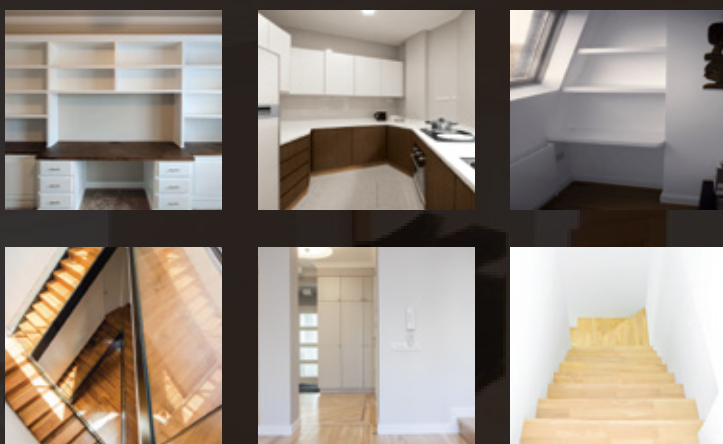


# Sx-1200

## SUPER ACRYLIC HIGH ELASTIC SEALANT



Sealex Sx-1200 is a special high quality acrylic sealant to provide and elastic seal joint and gap sealant.

Sealex Sx-1200 is designed to meet the standards of ASTM C-920 Movement capability  $\pm 25$

- Permanently Flexible
- Adheres to Most Surfaces
- Paintable
- Solvent Free / Odourless / Low VOC
- Water Based
- Mold Resistance
- Non-Sagging



SCAN QR CODE  
FOR INFORMATION

## COMPANY PROFILE

Sealex Chemical Co., Ltd. is a sealant and adhesive manufacturer subsidiary of the Inno-Cons Group of companies. Inno-Cons is a major supplier of construction material throughout the Kingdom of Thailand and South East Asia since 1992, focusing on construction products for metal building, pre-fabricated building, aluminum & glass, and precast concrete markets.

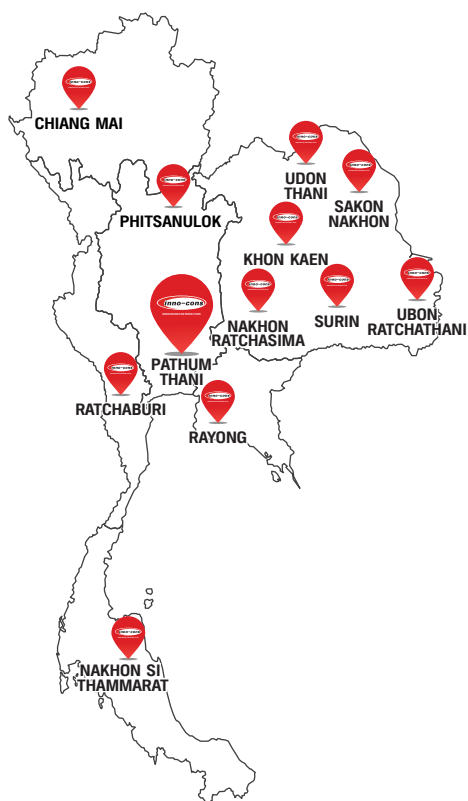
## Products offered by Sealex include :

- Hybrid Sealant offering less-stain, less dirt pick-up, anti-fungus, Low VOC, paintable sealant for perimeter, wall joints, and all weather applications.
- Hybrid Sealant Technology offers non-solvent, Low VOC adhesives for flooring, automotive and no-nail applications.
- High performance Silicone and Acrylic Sealants.



## YOUR SATISFACTION, OUR PRIORITY

- **12 Distribution Centers** Covering the entire Kingdom of Thailand
- **Sales Team** Knowledgeable and professionally trained sales team.
- **Customer Relations Team** Highly experienced team for handling all inquiries and after sales services.
- **Delivery Team** Strong logistic team to fulfill all nationwide deliveries on time.
- **Technical service** Expert technical teams ready to serve and assist all technical matters.
- **Quality Management System** QMS Standards of ISO 9001:2015 for consistently providing quality products and services to customers and regulatory requirements.
- **Export Markets** Partnered and exported to Asia Pacific countries



• Innovation of product



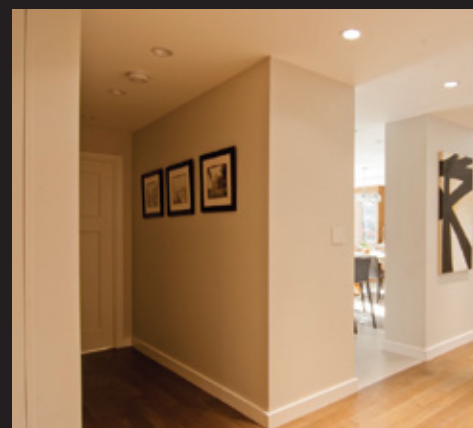
• Product training for customers



• Customer Care Service that our competitors and business associates speak about.



• On site Technical Service



Features	Benefits
Adheres to most Surfaces and Materials	Versatility and flexibility in applications
Long Term Flexibility	Unlike most of the other brands that quickly hardens up, Sealex Sx-1200 Japanese formulation provides long term flexibility and approved by Singapore government's Housing and Development Board for all public housing and commercial projects.
Isocyanate and Solvent Free	Safe to applicators and also people occupying the property in enclosed areas.
Mold Resistance	Resistance to mold suitable for sanitary application
Advanced Formulation	Capable of excellent water resistance after cured and exterior application
Paintable	Once cured can be painted with oil and non-oil based paints

## Applications

- Sealing aluminium, steel, timber and PVC window and door frames to concrete and other substrates
- Sealing interior joints of build-in furniture and external joints to walls
- Seal air-conditioning ducts
- Seal plaster and ceiling boards joins and gaps
- Seal skirting and cornices around rooms
- Sealing cracks on plasterboards, bricks, concrete before painting
- Sealing movement joints Crack filling before decorations

## Technical Specification

Appearance	Extreme white single part smooth thixotropic paste
Chemical	Water based acrylic
Specific Gravity	Approximately 1.55 to 1.60
Hardness (Shore A)	20 to 30 after 7 days
Full Cure	3 to 7 days (depending on thickness, humidity & temperature)
Tack Free Time	10 to 30 min (depending on humidity & temperature)
Volume Shrinkage	10% to 15%
Service Temperature	-15°C to 75°C
Elongation at Break	200% to 300%
Movement Capacity	Low to medium ±25%
Durability	Approximately up to 15 years when used as recommended
Shelf Life	Up to 18 months when stored correctly
Packaging	Cartridge 300 g.

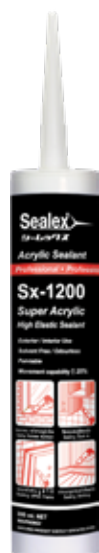
## Compliance and Approvals

- ASTM C920, Type S, Grade NS, Class 25 – tested by TUV SUD
- Singapore Government's Housing & Development Board (HDB) Approval List

## Limitation

- Avoid applications on damp surfaces as dampness significantly extends curing time.
- Avoid exposing to water until after fully cure
- Not suitable for submerged or permanently wet areas
- Not suitable for abrasive or physical abuse applications
- Do not apply externally if it is know that it will rain within 4 hours of application

## Size of Packaging & Accessory



300 g. (Cartridge)



600 ml. (Sausage)



Aluminium Sealant Sausage Gun



Sealant Cartridge Gun



# TECHNICAL SUBMITTAL

## Compliance and Approvals

- ASTM C920, Type S, Grade NS, Class 25 – tested by TUV SUD
- Singapore Government's Housing & Development Board (HDB) Approval List

TEST	'Sealex Sx-1200'	ASTM C920 : 2008 Standard Specification For Elastomeric Joint Sealants
1. Staining And Colour Change	No Staining and no colour change	The sealant shall not cause any visible staining on the top surface of a white cement mortar base
2. Extrudability	>10 ml/min	Type S (single component), grade NS (non-sag or gunnable sealant) shall have an extrusion rate time of not < 10ml/min
3. Rheological (Flow) Properties	Vertical displacement: 0 mm sag Horizontal displacement: No deformation	Grade NS (non-sag) or gunnable sealant shall have flow characteristics such that it does not sag > 4.8 mm in vertical displacement and shall show no deformation in horizontal displacement (refers to Types II and IV sealants)
4. Indentation Hardness Test piece 1, average Test piece 2, Average	25 25	T (traffic) sealant shall have a hardness reading of not <25 or >50 after being properly cured NT (non-traffic) sealant shall have a hardness reading of not <15 or >50 after being properly cured
5. Tack-Free Time	No transfer of test specimens to the polyethylene film	There shall be no transfer of the sealant to the polyethylene film when tested at 72 hours
6. Adhesion & Cohesion Under Cyclic Movement	No bond failure	The total loss in bond and cohesion areas among the three specimens tested for each surface shall not be >9 cm <sup>2</sup> with mortar substrates
7. Effects Of Heat Ageing On Weight Loss, Cracking And Chalking, average	1.0% No cracking and chalking	The sealant shall not lose >7% of its original weight or show any cracking and chalking
8. Effects Of Accelerated Weathering	No cracks after UV exposure and bend test	The sealant shall show no cracks after the specified UV exposure and shall show no cracks after exposure at cold temperature and the bend test
9. Adhesion-In-Peel, average	29.0 N (6.5 lbf) cohesive failure within the sealant and no adhesive bond loss between sealant and substrate for each test piece	The peel strength for each individual test shall not be <22.2 N (5 lbf) and the sealant shall show no >25% adhesive bond loss for each individual test
10. Material Identification/ Verification By FTIR	Acrylic polymer-based material (refer to Figure 1)	-
11. a. Maximum Tensile Strength, average b. Elongation At break, average c. Modulus Of Elasticity, average	0.1 N/mm <sup>2</sup> 207.3% 0.07 N/mm <sup>2</sup>	-

### LIMITED WARRANTY

The information contained in this document offered in good faith is believed to be accurate. However, as it is beyond our control on the conditions and methods of use of our products by our clients the information contained in this document should not be used in substitution for customer's tests to ensure that our products are safe, effective, and fully satisfactory for the intended end application.

Sealex warrants that all Sealex products meet the specifications herewith at the time of shipment. In the event of breach of such warranty Sealex is limited to refund of purchase price or replacement of any product shown to be other than as warranted.



INNO-CONS (THAILAND) CO., LTD.

78 Moo 7 Klongsi, Klongluang, Pathum Thani 12120

Tel : 02-524-0778-9 Fax : 02-524-2085-7 Website : [www.inno-cons.com](http://www.inno-cons.com)